

Docklands Light Railway City Airport Extension London, UK

Product used: Barchip 'Kyodo' 48mm

The Project

This 30 year Private Finance Initiative project covers the design, construction and long-term maintenance of a 4.4km extension to the Docklands Light Railway network which will provide greatly improved access to London City Airport.

The rail extension will run from Canning Town, with stations at West Silvertown and Pontoon Dock, before reaching the airport. There will also be a further stop beyond the airport at King George V (North Woolwich).

Barchip Kyodo fibre was used to reinforce the track slab along the full length of the 4.4km extension.

Barchip fibre was chosen over traditional bar reinforcement as it was able to offer a non-continuous reinforcement together with excellent fatigue and abrasion resistance.



Project Specifications

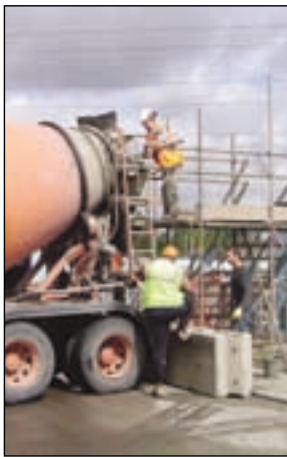
Completion Date:	2005
Client:	Docklands Light Railway Limited
Contractor:	AMEC
Cost:	£140 million
Size:	4.4km track slab
Amount Used:	in excess of 3,300m ³
Dose Rate:	6kg/m ³





Docklands Light Railway City Airport Extension London, UK

Site pictures



Dosing of the Barchip fibre on site from a specially constructed dosing station.



Barchip reinforced concrete is pumped up onto the elevated railway.



Pouring and finishing of the track slab.



Completed track ready for installation of track rail.



ELASTO - PLASTIC CONCRETE
www.elastoplastic.com

Australia

Contact: Matthew Maingay
Tel: +61 1300 131 158
mmaingay@elastoplastic.com

Nth America

Contact: Patrick Lewandowski
Tel: +1 716 685 3244
plewandowski@elastoplastic.com

Sth America

Contact: Jim Phillips
Tel: +56 (0)9 153 1854
jphillips@elastoplastic.com

Europe

Contact: Andrew Ridout
Tel: +44 (0) 77 8070 2642
aridout@elastoplastic.com